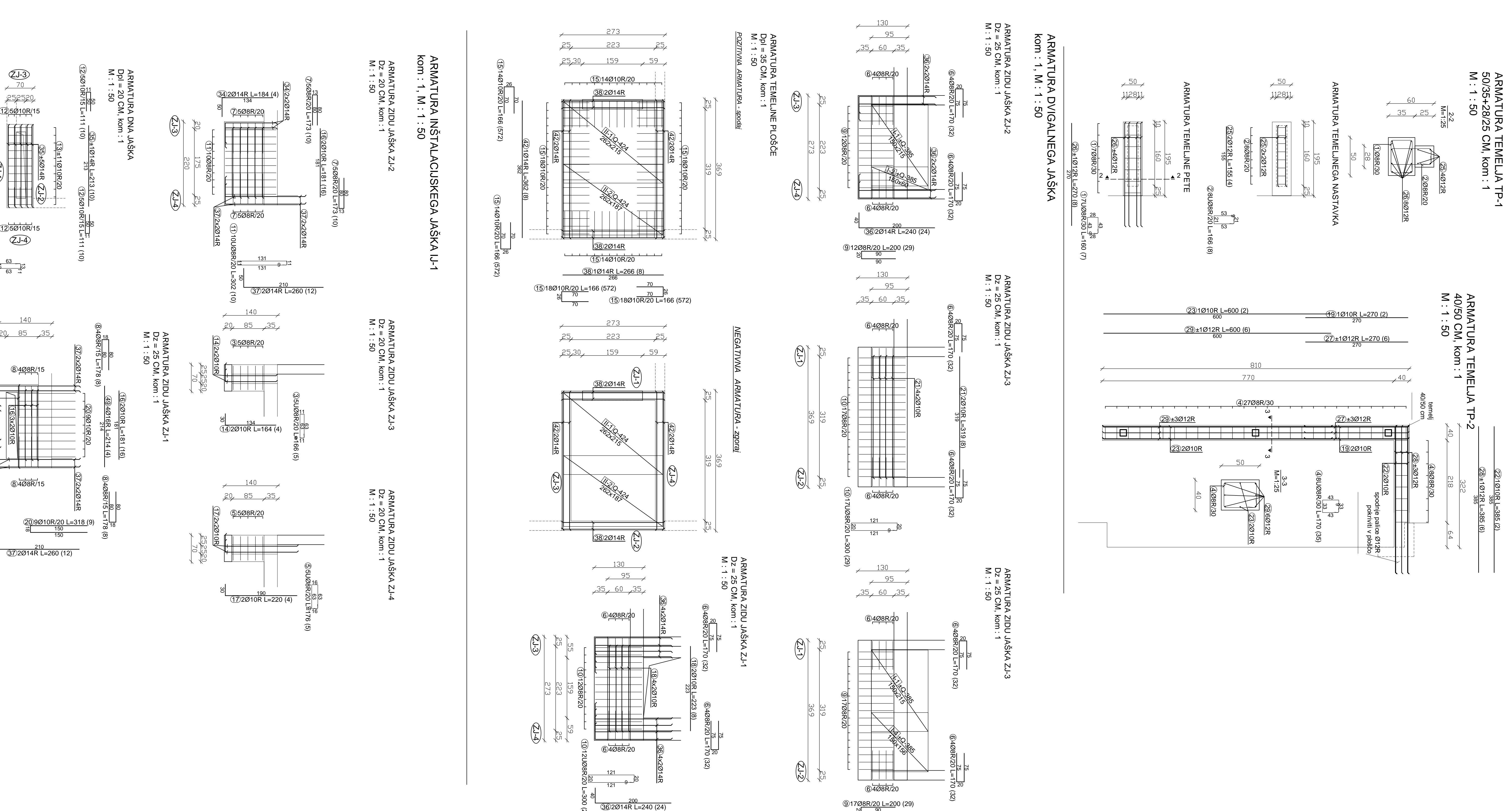
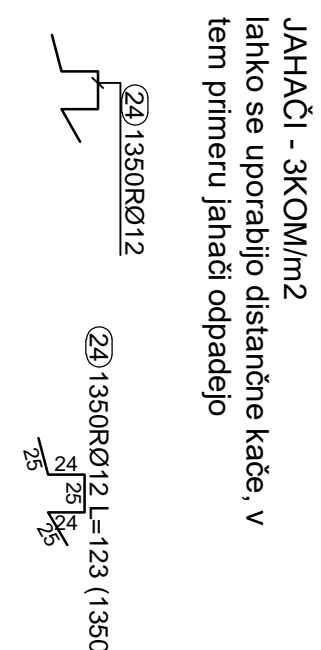
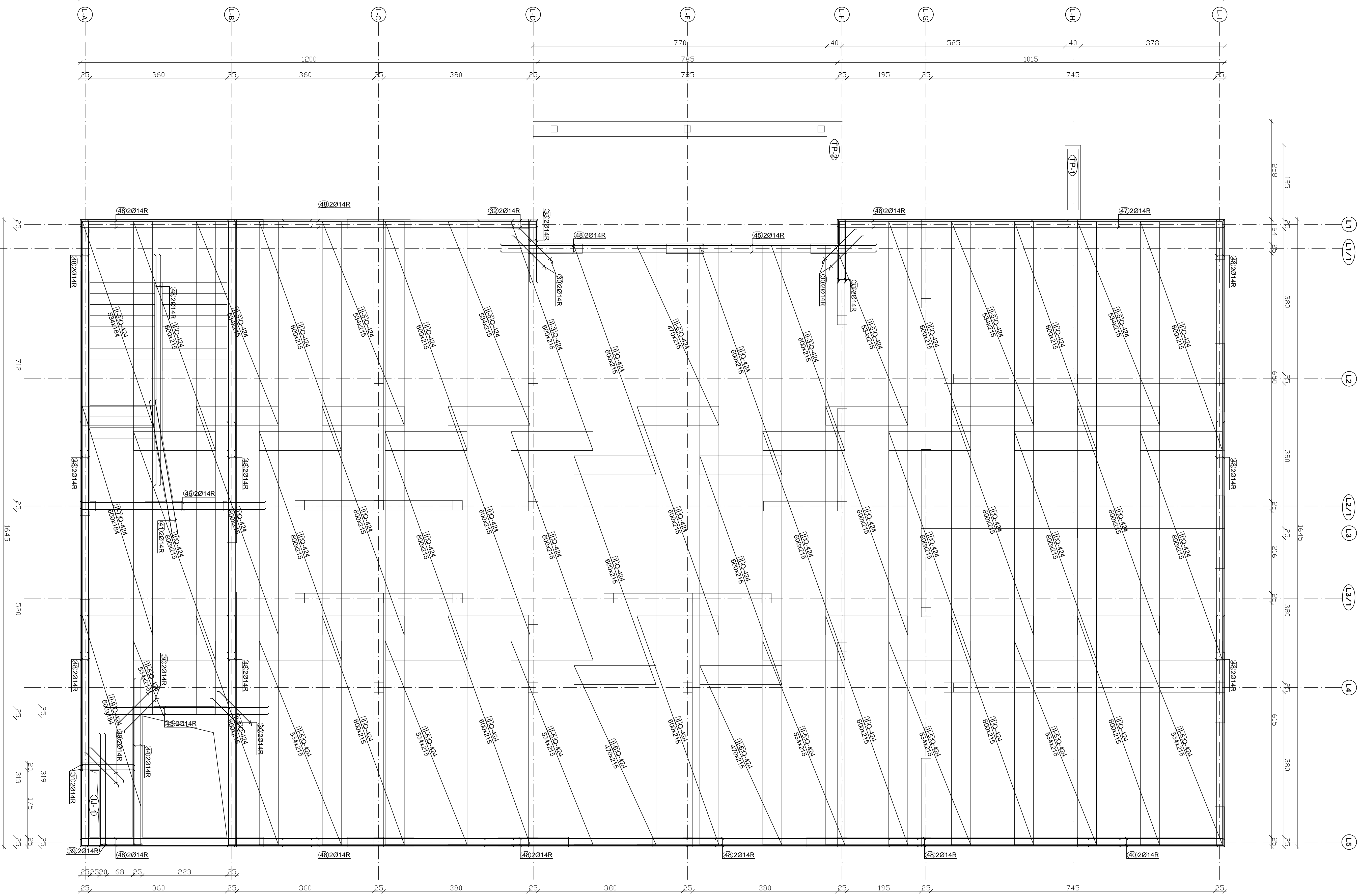
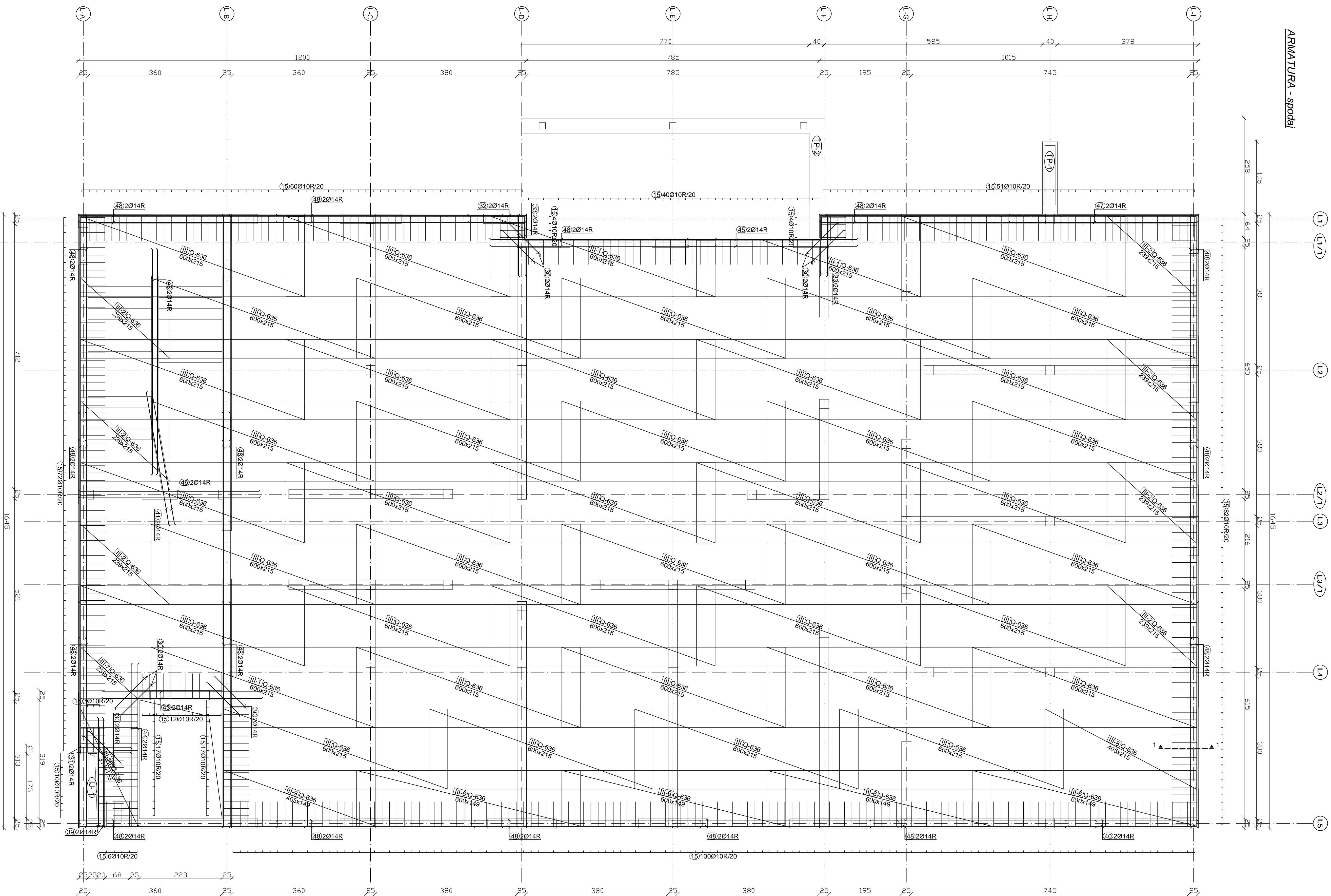
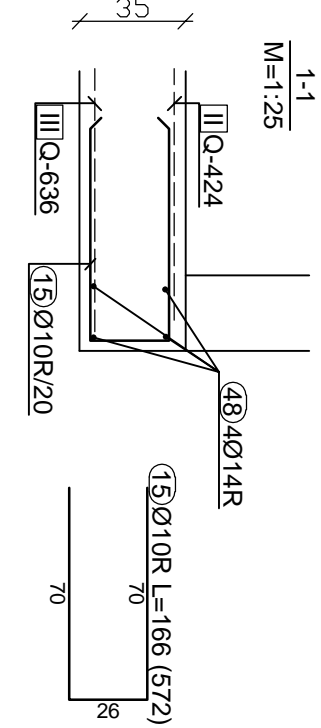


ARMATURA TEMELJNE PLOŠČE OBJEKTA  
Dpl = 35 CM, KOM : 1  
M : 1 : 50

10:30 - 11:00 AM

10:30 - 11:00 AM



Police coordinates		coordinates		0	$\frac{H}{L}$	$\frac{H}{L}$	$\frac{H}{L}$
1:500 VISUAL SCENE, ORIENTED BY TURNING IN PLACE TO ORIENTATE 1:1000							
1		0	1.60	7	11.5		
2		0	1.60	8	13.2		
3		0	1.60	5	8.1		
4		0	1.70	36	6.8		
5		0	1.70	5	8.1		
6		0	1.70	32	5.4		
7		0	1.73	10	17.5		
8		0	1.70	8	14.2		
9		0	2.00	29	5.8		
10		0	3.00	20	6.7		
11		0	3.02	10	30.2		
12		0	1.11	10	11.1		
13		0	1.74	22	38.5		
14		0	1.84	4	6.2		
15		0	1.68	37	34.9		
16		0	1.81	46	28.8		
17		0	2.00	4	8.8		
18		0	2.20	8	9.2		
19		0	2.77	2	5.7		
20		0	3.18	0	28.7		
21		0	3.19	6	26.2		
22		0	3.65	2	7.3		
23		0	6.00	2	12.7		
24		0	1.27	1300	166.0		
25		0	1.56	4	6.2		
26		0	2.70	4	17.2		
27		0	3.60	4	20.1		
28		0	3.60	4	19.4		
29		0	3.60	4	19.4		
30		0	3.60	4	19.4		
31		0	3.60	4	19.4		
32		0	3.60	4	19.4		
33		0	3.60	4	19.4		
34		0	1.84	4	7.2		
35		0	2.13	10	21.3		
36		0	2.82	24	57.7		
37		0	2.80	52	31.2		
38		0	1.4	14			
39		0	2.00	52			
40		0	2.00	52			
41		0	2.44	16			
Police location							
0		0	1.41	1000	120		
8		0	3.41	146			
10		0	5.60	742			
14		0	5.00	1730.60			
16		0	8.00	150			
30		0	8.00	144			
30.00 (N)							
33.00 (E)							

NAMES - NOMENOS		Gravimetric	B	L	n	Thermal conductivity	Thermal conductivity
			[mm]			[W/mK]	[W/mK]
<p>ISO 10518:2004, GASET B, THERMAL CONDUCTIVITY, 11 mm</p>							
L1	Q-385	215	102	4	6,1	789	789
L2	Q-385	168	102	2	6,1	789	789
L4	Q-424	215	800	3	6,1	722	722
S-1	Q-424	215	262	2	6,81	717	717
S-2	Q-424	187	262	2	6,81	697	697
S-3	Q-424	215	262	2	6,81	697	697
S-4	Q-424	215	420	3	6,81	206	206
S-7	Q-424	186	534	1	6,81	697	697
S-8	Q-424	186	534	1	6,81	697	697
S-9	Q-424	215	600	4	10,5	789	789
S-10	Q-424	215	600	3	10,5	390	390
S-11	Q-424	215	600	3	10,5	390	390
S-12	Q-424	215	293	4	10,5	391	391
S-13	Q-424	215	293	4	10,5	391	391
S-14	Q-424	215	293	4	10,5	391	391
S-15	Q-424	215	293	4	10,5	391	391
S-16	Q-424	215	293	4	10,5	391	391
S-17	Q-424	215	293	4	10,5	391	391
S-18	Q-424	215	293	4	10,5	391	391
S-19	Q-424	215	293	4	10,5	391	391
S-20	Q-424	215	293	4	10,5	391	391
S-21	Q-424	215	293	4	10,5	391	391
S-22	Q-424	215	293	4	10,5	391	391
S-23	Q-424	215	293	4	10,5	391	391
S-24	Q-424	215	293	4	10,5	391	391
S-25	Q-424	215	293	4	10,5	391	391
S-26	Q-424	215	293	4	10,5	391	391
S-27	Q-424	215	293	4	10,5	391	391
S-28	Q-424	215	293	4	10,5	391	391
S-29	Q-424	215	293	4	10,5	391	391
S-30	Q-424	215	293	4	10,5	391	391
S-31	Q-424	215	293	4	10,5	391	391
S-32	Q-424	215	293	4	10,5	391	391
S-33	Q-424	215	293	4	10,5	391	391
S-34	Q-424	215	293	4	10,5	391	391
S-35	Q-424	215	293	4	10,5	391	391
S-36	Q-424	215	293	4	10,5	391	391
S-37	Q-424	215	293	4	10,5	391	391
S-38	Q-424	215	293	4	10,5	391	391
S-39	Q-424	215	293	4	10,5	391	391
S-40	Q-424	215	293	4	10,5	391	391
S-41	Q-424	215	293	4	10,5	391	391
S-42	Q-424	215	293	4	10,5	391	391
S-43	Q-424	215	293	4	10,5	391	391
S-44	Q-424	215	293	4	10,5	391	391
S-45	Q-424	215	293	4	10,5	391	391
S-46	Q-424	215	293	4	10,5	391	391
S-47	Q-424	215	293	4	10,5	391	391
S-48	Q-424	215	293	4	10,5	391	391

[illegible]